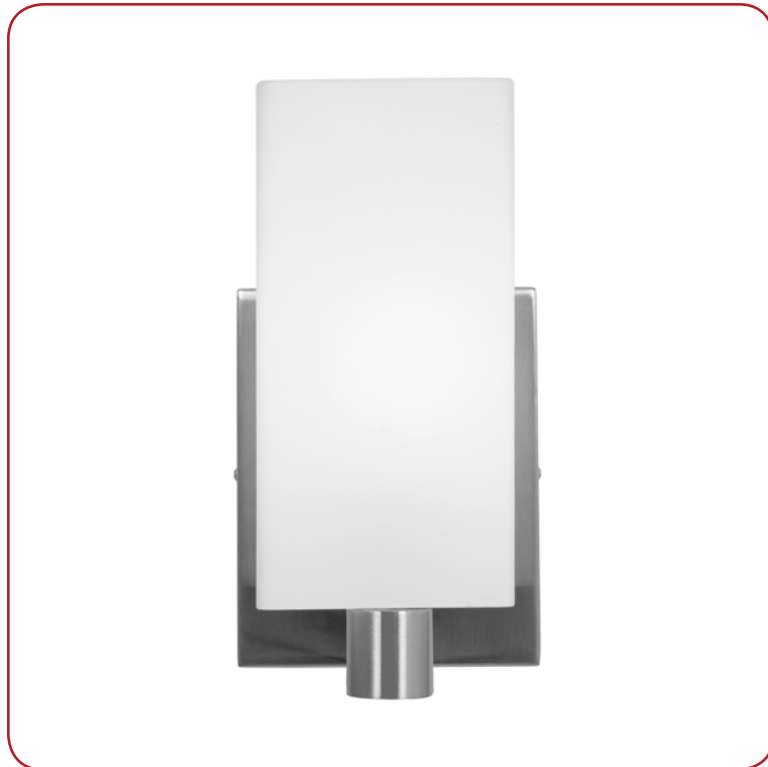


Model No :: **50175LEDDL-BS/OPL**  
 Name :: Archi



Project Name :: \_\_\_\_\_  
 Location :: \_\_\_\_\_  
 Type :: \_\_\_\_\_  
 Quantity :: \_\_\_\_\_  
 Notes :: \_\_\_\_\_

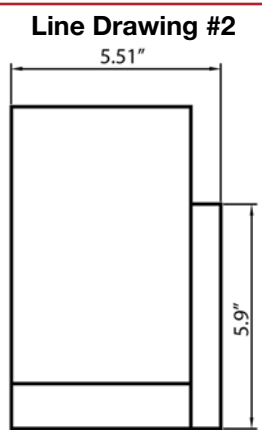
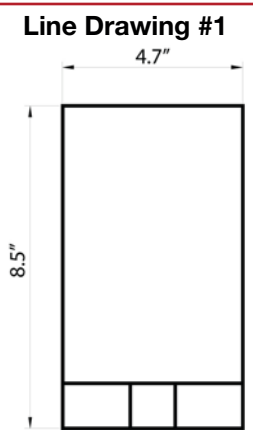
Product Information	
Product ID ::	50175
UPC Code ::	641594216035
Mounting Type ::	Wall
Finish ::	Brushed Steel (BS)
Diffuser ::	Opal (OPL)
Alt. Finishes ::	Brushed Steel (BS)
Alt. Diffusers ::	Opal (OPL)

Product Dimensions		
<b>Fixture</b>		<b>Canopy</b>
Length ::	N/A	Length :: 6"
Width ::	4.75"	Width :: 4.75"
Diameter ::	N/A	Diameter :: N/A
Extension ::	5.75"	Height :: 1"
Height ::	8.5"	
Overall Height ::	N/A	



### Technical Specifications

Qualifications	Specifications	Photometrics	Recommended Dimmers
Location Rating :: Damp	Frame Material :: Metal	CCT :: 3000	(ELV) LUTRON Skylark SELV-300P; (MLV) COOPER Aspire 9530SW; (TRIAC) LEGRAND Titan CD703-PW
Certification :: ETL Listed (US/Canada)	Diffuser Material :: Glass	CRI :: 90	
IES File ::	Voltage :: 120v	Wattage :: 10w	
JA8 Compliant :: Yes	Lamping Type :: Replaceable LED	Nominal Lumens :: 800Lm	
Energy Star :: Yes	Lamping Base :: E-26	Delivered Lumens :: N/A	
ADA Compliant :: No	Lamp Quantity :: 1	Additional Items :: 0	
Marine Grade :: No	Lamp Wattage :: 10 W		
Emergency Lighting :: No	Total Wattage :: 10w		
Warranty :: 3 Year Limited	Lamps Included :: Yes		
	J-Box Type :: Standard		



**IES File**

Image Not Available

Toll Free 800-828-5483 • [www.AccessLighting.com](http://www.AccessLighting.com)

14410 Myford Road, Irvine, CA 92606  
 The information provided is subject to change without notice. ©2020 Access Lighting Corporation. All Rights Reserved  
 Rev. 202004 Filename:: 50175LEDDL-BS\_OPL.pdf

