

Model No :: **62601LEDD-BS/ACR**  
 Name :: Citi II



Project Name :: \_\_\_\_\_  
 Location :: \_\_\_\_\_  
 Type :: \_\_\_\_\_  
 Quantity :: \_\_\_\_\_  
 Notes :: \_\_\_\_\_

**Product Information**

Product ID :: 62601  
 UPC Code :: 641594241983  
 Mounting Type :: Wall  
 Finish :: Brushed Steel  
 Diffuser :: Acrylic Lens  
 Alt. Finishes :: Brushed Steel (BS)  
 Alt. Diffusers :: Acrylic Lens (ACR)

**Product Dimensions**

<b>Fixture</b>	<b>Canopy</b>
Length ::	Length ::
Width :: 24	Width ::
Diameter ::	Diameter ::
Extension :: 2.75	Height ::
Height :: 5.5	
Overall Height ::	



**Technical Specifications**

**Qualifications**

Location Rating :: Damp  
 Certification :: ETL Listed (US/Canada)  
 IES File ::  
 JA8 Compliant :: No  
 Energy Star :: No  
 ADA Compliant :: No  
 Marine Grade :: No  
 Emergency Lighting :: No  
 Warranty :: 1 Year Limited

**Specifications**

Frame Material :: Metal  
 Diffuser Material :: Acrylic  
 Voltage :: 120v  
 Lamping Type :: LED SSL (DLED)  
 Lamping Base :: SSL  
 Lamp Quantity :: 1  
 Lamp Wattage :: 25 W  
 Total Wattage :: 25 W  
 Lamps Included :: Yes  
 J-Box Type :: Standard

**Photometrics**

CCT :: 3000 K  
 CRI :: 90  
 Wattage :: 25 W  
 Nominal Lumens :: 1750  
 Delivered Lumens :: 1420

**Recommended Dimmers**

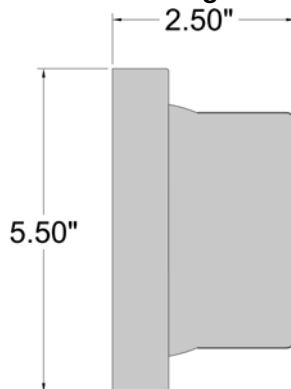
(ELV) LUTRON Caseta PD - 6WCL; (ELV) LUTRON Maestro CL MACL-153M; (ELV) LUTRON Maestro MRF2-6CL; (TRIAC) LUTRON Diva DVCL-153P

Additional Items ::

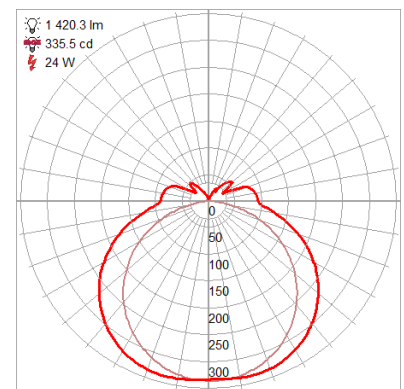
**Line Drawing #1**

Image Not Available

**Line Drawing #2**



**IES File**



**Toll Free 800-828-5483 • www.AccessLighting.com**

14410 Myford Road, Irvine, CA 92606

The information provided is subject to change without notice. ©2020 Access Lighting Corporation. All Rights Reserved  
 Rev. 202105 Filename:: 62601LEDD-BS\_ACR.pdf

