

CATEGORY: Sconce

**DIMENSIONS**

**Length / Ø:** 5.5"  
**Width:** N/A"  
**Height:** 11.5"  
**Depth:** 6"  
**Minimum Height:** N/A"  
**Maximum Height:** N/A"

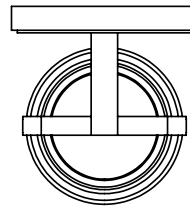


**LAMPING**

**Number of Sockets:** 1  
**Wattage of Individual Socket:** 40  
**Socket Type:** Medium Base  
**Bulbs Included:** No  
**Orientation of Light Source:** Down  
**Lamp Confinement:** Fully Enclosed  
**Voltage:** 120  
**Dimmable:** Yes

**FINISH OPTIONS**

Black with Clear Glass  
 Black and Ironwood On Metal with Clear Glass



**WARRANTY**

5 Years Residential  
 20,000 Hours Commercial

**PIPE / CHAIN INFORMATION**

**Pipe/Chain Kit Available:** No

**ADDITIONAL INFORMATION**

**Location Certification:** Wet Location Certified  
**Maximum Slope Ceiling Angle:** 0  
**ADA Compliant:** No  
**Wall and Ceiling Mountable:** No

